



SGD

SOCIETY OF
GARDEN
DESIGNERS

Leading the way in excellence and innovation

THE SGD CONFERENCE

NATURAL NETWORKS

Connectivity in Garden and Landscape Design

Saturday 4 February 2023

Royal Geographical Society, 1 Kensington Gore, London, SW7 2AR

CONTENT

- 3 The Venue & How to Get There
- 5 Conference **Agenda**
- 9 A **Foreword** from the SGD Co-Chairs
- 11 The SGD **Manifesto**
- 12 The Conference Theme: *Natural Networks*
- 13 **Annie Guilfoyle: Conference Host Biography**
- 15 **Lulu Urquhart & Adam Hunt:**
Speaker Biography & Presentation Outline
- 17 **Professor Helen Woolley:**
Speaker Biography & Presentation Outline
- 19 **Dusty Gedge: Speaker Biography & Presentation Outline**
- 21 **Tom Hoblyn MSGD:**
Speaker Biography & Presentation Outline
- 23 **Helen Elks-Smith FSGD:**
Speaker Biography & Presentation Outline
- 25 Exhibitor Stand **Floor Plan**
- 26 List of **Exhibitors** by Stand Number
- 40 UPCOMING **SGD EVENTS**

If you have any queries or issues during the conference, please call the SGD office on **01989 551083**. You will be redirected to a member of the office team on site at the venue.

THE VENUE & HOW TO GET THERE

Royal Geographical Society 1 Kensington Gore, London, SW7 2AR

The venue is within easy reach of multiple Underground stations, including South Kensington, Gloucester Road and Knightsbridge, and within a 30 minute walk of both Paddington and Victoria railway stations.

There are a number of public bicycle racks in the area, including one (capacity: 14) on the north side of the Royal Geographical Society's building.

The nearest public car park is on Kensington High Street.

Delegate entry is via the Exhibition Road entrance, where you will find our welcome desk.



landscapeplus

STAND 19

Supplying the UK's garden professionals with the best brands, at the best prices since 2000

Landscapeplus was established over 20 years ago by two brothers with a rich horticultural background. Having both worked with gardens, arboriculture, garden centres, and even the National Trust, they not only had a great foundation of knowledge, but they also experienced problems within the industry first-hand.

The main issue they recognised was that the industry was very poorly served in both product selection and service. This prompted the creation of Landscapeplus, which has since grown to become the industry's only one-stop-shop for lighting, water features and irrigation. But that's not all.

"So much more than a supplier" is a phrase we hear often. In addition to an extensive and high-quality product selection, Landscapeplus also provides a unique Design Support Service. This service offers designers and contractors the option to work alongside our experienced team, in which we can help develop ideas and provide the support needed to ensure systems are installed correctly and work properly for any project requirements.



Creative Roots

LIGHTING

✓ Best Trade Prices



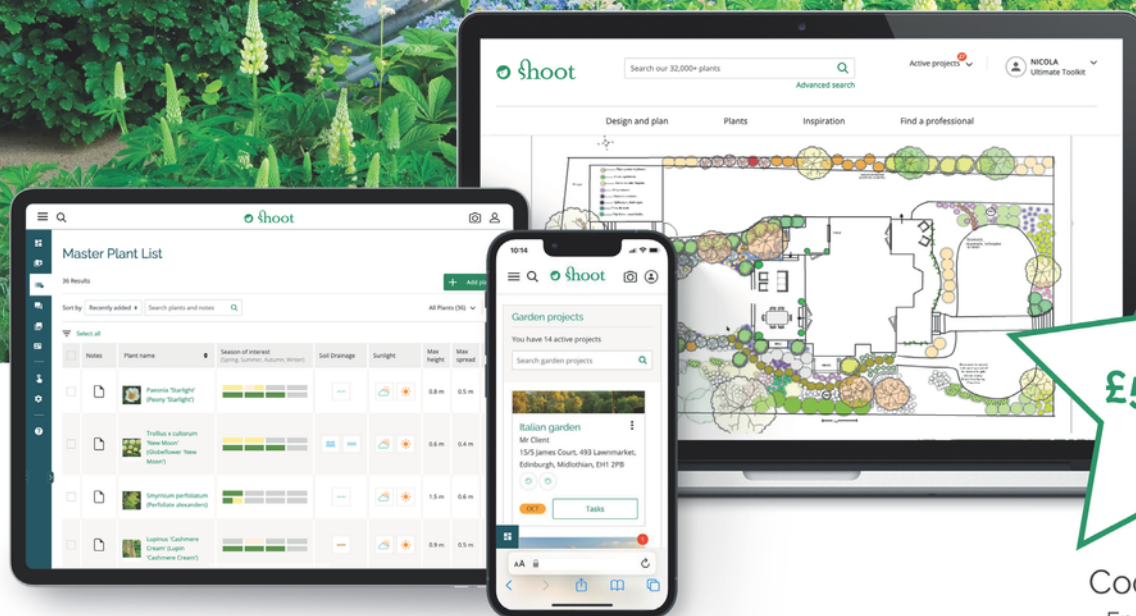
WATER FEATURES

✓ Professional Products



IRRIGATION

✓ Direct to you



SDG
£50 OFF
 Today

Code: SGD23
 Ends today 5pm

Your cutting-edge new Shoot

 **shoot**

After years of research and development, your newly designed Shoot website brings additional valuable resources and features to save you even more time and money, including a new 'master plant list' and 'season of interest colour charts' at a click.

www.shootgardening.co.uk

On Stand 18:
 Benjamin Sparks, Jacky Robinson

CONFERENCE AGENDA

- 8.45am Registration, Trade Exhibitions & Bookstall, Refreshments
- 9.45am Assemble in the Lecture Theatre
- 9.50am Welcome from SGD Co-Chairs
LYNNE MARCUS and
ANDREW DUFF MSGDs
- 9.55am NICOLA GAMMON :
Shoot sponsor presentation
- 10:05am ANNIE GUILFOYLE :
Introduction
- 10:20am URQUHART & HUNT :
Presentation & Q&A
- 11:15am Refreshments, Trade Exhibitions
& Bookstall.
- 11:35am PROFESSOR HELEN WOOLLEY
Presentation & Q&A
- 12:30pm JOSH MURRAY & RYAN
SIMMONDS:
*Landscapeplus sponsor
presentation*



- 12.40pm Buffet Lunch
- 2:00pm DUSTY GEDGE:
Presentation & Q&A
- 14:55pm TOM HOBLYN MSGD :
Presentation & Q&A
- 3:50pm Tea, Coffee & Cake, Trade
Exhibitions, Bookstall
- 4:10pm HELEN ELKS-SMITH FSGD :
Presentation & Q&A
- 5:05pm ANNIE GUILFOYLE :
Summing up
- 5:15pm Close

The SGD would like to thank our
Conference sponsors

landscapeplus shoot



PROVENDER

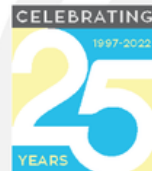
saving the
planet is difficult.

planting
a tree
is simple.

with over 3000 on site, the
only tricky thing is the choice.



Garden Designers Insurance



MFL have been providing Professional Insurance Solutions for members of the Society of Garden Designers for over 15 years.

Professional Indemnity Insurance starting from £75 a year plus IPT*

Claims against your business for professional negligence or breach of contract that causes your client a financial loss.



- Competitive pricing on all cover limits starting from £50,000
- Wide Civil Liability wording
- Legal costs in defending claims arising from professional negligence
- Indemnity for use of subconsultants
- Third-party Cyber cover
- Availability of 6 year run off policies
- £0 Excess first claim for qualifying firms

Finance options available

Additional benefits provided to PI Insurance policyholders

Free Contract and Vetting Service

Review contracts to ensure they don't impose obligations which may not be covered by your professional Indemnity insurance.

Free Legal Helpline

Provides fast, efficient telephone assistance for one-off queries relating to the conduct of your business.

Discounted Legal Services

Should you need to instruct a Solicitor in relation to contractual issues, additional legal services are available

Optional protection



- Public Liability add-on available for Garden planting, maintenance works.
- Cyber Insurance
- Directors' & Officers' Liability
- Crime Insurance
- Office Insurance
- Motor Fleet Insurance
- Employers Liability

Proud to be associated with



Your profession. *Covered!*

www.mflinsurance.com 0161 236 2532



FOREWORD FROM THE SGD CO-CHAIRS

Connectivity is such an exciting process. If you think about it, everything we do is about connections whether it's a physical connection, visual connection or indeed an emotional connection.

Our world is quite literally a web of links between living things. This is why it's so important to learn more about the importance of connections, how we can use them in our designs and help to promote environmental and sustainable positivity.

We need to move forward from this idea that the garden boundaries are merely about ownership, and begin to see them as an exciting and dynamic connection between spaces, gardens and landscapes.

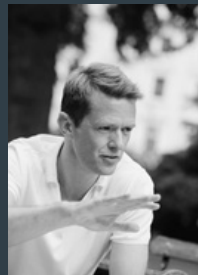
As we move through our daily lives it is worth pausing for a moment to consider our connection with the world, how we and ultimately our clients feel within a space and how we can design with better connectivity in mind.



A white handwritten signature of Lynne Marcus on a dark background.

Lynne Marcus
MSGD

CO-CHAIR OF THE SGD



A white handwritten signature of Andrew Duff on a dark background.

Andrew Duff
MSGD

CO-CHAIR OF THE SGD



TENDER CARE

Mature & Formal Hardy Plants



WHAT WE OFFER

A unique selection of mature trees from 50L to 1500L for privacy, flowers and seasonal interest. Combined with our specimen shrubs, wall shrubs and climbers in 20L and 35L, perennials, ferns and groundcovers in 5L and 10L, you can choose a complete garden of stunning plants to arrive from one nursery. Start your next project with a visit to our nursery for inspiration and the discovery of new possibilities.

Situated in Denham near J1 M40

How big it is and what kind of vehicle you will need to deliver it in.

Records all the plants you see which you can review on your list later.

It tells us you want to buy it now and we can get it ready for take away or for delivery.

Shows you discounts you will be given as your order size increases. = % DISCOUNT

If the plant you see is not as big or bigger than you would like, it will tell you where other batches of different sizes are located.

Just pick up a map and some sold tags from the sales office, so that you can confirm your choices.

Visit Our Trade Zone to register for a Trade account.

SCAN ME



For instant access to our STOCK AVAILABILITY and additional discounts, download our APP

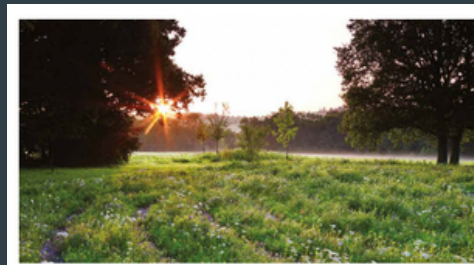
SCAN ME



THE SGD MANIFESTO FOR SUSTAINABLE LANDSCAPE & GARDEN DESIGN

This Manifesto, published following the [SGD Symposium](#), is a declaration of intent and is designed to establish principles and methodologies that encourage SGD Members and Affiliated Business Partners to create gardens and landscapes where sustainability comes first.

[Click here](#) to download the SGD Manifesto.



The Society of Garden Designers presents its declaration of intent, to challenge the status quo and encourage its members to implement ways of working and making gardens and landscapes where sustainability always comes first

MANIFESTO FOR SUSTAINABLE GARDENS AND LANDSCAPES

Designers' responses to the 2022 SGD Symposium, the Society's first of its kind, have shown a clear commitment to sustainability. The need for a manifesto and a declaration of intent has been established, and it is the Society's responsibility to ensure that its members and affiliates are equipped with the tools and resources to create sustainable gardens and landscapes. This should be achieved by recognizing key elements which include best landscape materials, construction and approach to...

Resources: water as a resource: soils, and plants, planting and an increase in biodiversity.

Apex to resources
We must:

- consider capturing, recycling or applying sustainable waste, mulch, concrete foundations, and soil. Soils, all can be treated for the good of the soil (compost).
- reduce areas of hard landscaping.
- select soil designers, those that do not rely on the horticultural and use implications of using different manure's and soil uses, a holistic approach to landscape design, including the energy consumption in their manufacture and the distance of transport from source to site.
- question the advantages and disadvantages of the use of stone and quarrying of natural stone and subsequent deliveries of landscape stone using methods that are ethical.
- advocate the use of renewable materials.

Water as a resource
We must:

- conserve water and minimize the chances of water run off through permeable surfaces by using sustainable drainage systems (SuDS).
- change the soil. Its 'water and soil'.
- investigate drainage systems that reduce runoff and retain it in the soil to reduce the need for irrigation.
- investigate 'rain gardens' where rain can be stored, slowly, with plants that have a high water holding capacity, to reduce the need for irrigation.
- investigate the use of permeable paving materials that can store water and limit the chances of runoff.
- promote water saving products, and take advantage of rain water harvesting systems.

Soil
We must:

- value the soil, and treat it as a precious resource that will support the growth of plants and trees, and reduce species richness.
- work with what we have, and not try to create a perfect landscape, but one that is resilient and can support the growth of plants and trees.
- where possible, only modify soils with natural materials, such as compost, mulch, or manure, and avoid synthetic fertilizers and pesticides.
- reduce the need for fertilizers by using natural products.

Plants, planting, increasing biodiversity, and restoring ecosystems
We must:

- create habitats, including the range of species and responses to the natural world, gardeners and landscapes. Plants, animals, insects, bacteria.



'TREAD WITH A LIGHT TOUCH AND THE EARTH WILL REPAY YOU IN MORE WAYS THAN YOU CAN IMAGINE. WE MUST TRY HARDER. WE MUST DO BETTER.'
 SIR JOHN BURNETT

OUR DECLARATION OF INTENT

THE SGD MANIFESTO FOR SUSTAINABLE GARDENS AND LANDSCAPES is a declaration of intent, to challenge the status quo and encourage its members to implement ways of working and making gardens and landscapes where sustainability always comes first.

RECOGNITION OF THE NEED FOR A MANIFESTO is the result of the 2022 SGD Symposium, the Society's first of its kind, which has shown a clear commitment to sustainability. The need for a manifesto and a declaration of intent has been established, and it is the Society's responsibility to ensure that its members and affiliates are equipped with the tools and resources to create sustainable gardens and landscapes. This should be achieved by recognizing key elements which include best landscape materials, construction and approach to...

For SGD Members and Partners, we have released a Manifesto Support Guide which contains practical advice and ideas on how to work more sustainably with contributions collated from the SGD members and experts who attended the Symposium. Please [click here](#) to download the Manifesto Support Guide which is available on the Members section of the website under the General tab.



Since October 2022, the Society has run a number of CPD (Continued Professional Development) sessions to share knowledge and advice on designing sustainably. [Find out more and book a place on a CPD session here.](#)

The SGD Manifesto, the Manifesto Support Guide and the new CPD sessions are part of a longer-term SGD strategy, set out in its Environmental Action Plan, that has been adopted to address both the environmental crises of climate change and biodiversity loss. [You can find out more about the Plan here.](#)

NATURAL NETWORKS

Connectivity in Garden and Landscape Design

Garden design practice happens at the multiple intersections of plants, places, people and the planet and holds dynamic potential for ensuring a sustainable future in a world of diminishing resources and climate change. A cast of distinguished speakers, including ecologists and landscape architects, will explore these natural networks through a range of public and private projects of different scales.

The keyword is **connectivity**: between people and the earth they tend, flora and fauna, garden designer and client, past and present uses of the site, landscape memories and creative imagination, seamless transitions between buildings and nature, children's play spaces and their development through life.



The speakers will reveal their ideas and approaches to designing green spaces that are underpinned by the core principles of sustainability and the characteristics of site and local ecology. While some of the projects presented are more extensive than the average residential garden, the design thinking and underlying values are directly transferrable to smaller spaces and more modest budgets.

YOUR CONFERENCE HOST

ANNIE GUILFOYLE



Annie is an award-winning garden designer, consultant and writer based in West Sussex. She studied horticulture at Capel Manor College, then gained an honours degree in Garden Design at Middlesex University.

Annie was Director of Landscape Design for 18 years at KLC School of Design and is now the Garden Course Consultant at West Dean College. She has also developed a monthly garden design course at Great Dixter entitled The Art and Craft of Garden Design.

Seven years ago Annie together with Noel Kingsbury created Garden Masterclass, a learning portal for both live and online events taking place all over the UK and mainland Europe. These feature the top people in the industry and the up and coming too.

Annie's publications include three extensive open learning courses for KLC and articles for Gardens Illustrated, Country Living and The Garden Design Journal. Her television work demonstrates Annie's expertise in transforming tiny spaces into contemporary urban sanctuaries. Modern art and architecture are key influences and she works closely with the client to produce a truly tailored design.

Annie is also a show garden judge at the RHS Chelsea Flower Show, Philadelphia Flower Show and Orticolario at Lake Como. She lectures internationally at Chanticleer PA and for the APLD in Seattle and is on the selection committee for Masters of the Landscape Festival in Bergamo.

YOUR CONFERENCE HOST

ANNIE GUILFOYLE

Making connections - enriching your practice

We gather in a conference situation and are surrounded by like-minded friends and contemporaries. We listen to inspirational speakers and leave at the end of the day filled with lots of ideas and renewed enthusiasm. But what happens next? How are connections between people, places and nature forged?

How quickly do these new ideas and thoughts dissipate and fall to the back of our minds, especially when we launch back into our project work, to meet client deadlines?

As Chair for the day Annie will introduce the speakers. She will open proceedings with her personal views on how best to process and develop information to enrich your own design practice and maintain your creativity.



LULU URQUHART AND ADAM HUNT



Lulu Urquhart and Adam Hunt work in collaboration with the land.

Their landscape design practice, established eighteen years ago, specialises in garden design and ecological restoration.

A primary focus of their approach is to increase biodiversity and facilitate our deep connection with nature.

Their recent work with beavers, a keystone species once lost and now reintroduced to British lands, speaks to their commitment to restoring and safeguarding wild places, letting nature take the lead in developing a reciprocal and balanced relationship with wildlife, plants and the planet.

As first-time exhibitors at RHS Chelsea Flower Show 2022, they won a gold medal and Best in Show for their 'A Rewilding Britain Landscape', which included a beaver's dynamic habitat within a native landscape in the process of rewilding and flourishing biodiversity.

Focusing on organic principles, they use native plants wherever possible to increase biodiversity and natural habitat health, whilst their sensitivity to cultural history brings the much-needed human dimension into the landscape.

Along with Suzi Martineau, they are co-founders of The Tree Conference – an annual event encompassing climate science and deep ecology to understand our relationship with and the true value of trees.



LULU URQUHART AND ADAM HUNT

Flourishing Biodiversities: Designing for Nature

Lulu and Adam will speak about how they tailor their approach to landscape design in order to address and bolster biodiversity, creating connections between our gardens and the wider natural world.

Their talk will draw on a selection of their projects. In particular they will discuss the challenges posed by both smaller scale residential gardens and wide scale estate management, restoration and land healing.

Their presentation will explore how all aspects of their work – from collaborating with like-minded people to designing with plants for habitat creation – aim to connect us with nature, as well as provide networks for wildlife. They will discuss how their 'A Rewilding Britain Landscape' garden represents this ethos and their journey in the creation of the garden.

Looking forward, they will consider the role of gardens as key habitats across the wider UK landscape.



PROFESSOR HELEN WOOLLEY

Helen Woolley is Professor of Landscape Architecture, Children's Environments and Society at the University of Sheffield. She has worked in and for both public and private sectors before returning to academia.

She was the only academic CABE Space Enabler supporting local authorities to develop Green and Open Space Strategies and then Play Strategies.



Much of Helen's work continues to be policy and practice facing through her collaborations with and influences on the work of government, charities, social housing providers, play equipment companies, landscape architects and others locally, nationally and internationally.

Helen's research has focused on people's use of urban open spaces, including children's perception of city centres, skateboarders' activity in found spaces and the controls put on them. She has critiqued the provision of 'Kit, Fence, Carpet' playgrounds and researched the inclusion of disabled children in school playgrounds.



During the last 10 years she has studied what happened to children's outdoor play spaces in the post triple disaster area in north-east Japan and the constructed and found spaces of play in a refugee camp in Jordan. She also supervises a group of PhD students studying Growing Up in China in the context of rapid urbanisation in the last 50 years.

PROFESSOR HELEN WOOLLEY

Children's Relationship with Nature in Outdoor Play: Past, Present and Future

Children have always played outdoors, however the opportunities and character of such play constantly changes. Helen will illustrate how this has been particularly evident in her own lifetime where changes in family and society have been highly influential. Such changes are sometimes supportive, but often restricting children's activities in outdoor environments and therefore limiting children's experience with nature. Part of this journey through time includes the highlight of policy and funding support by the English government at the turn of the new millenium.

Helen's presentation will give insights into the poor provision of constructed spaces evidenced by the Play Value Assessment tool that she and her team have developed. One example is a partnership project with Sheffield City Council Housing Services where they sought to improve the almost non-existent constructed play spaces. She will also introduce the concept of found spaces underpinned by the theory of affordance.

Helen argues that designing spaces and opportunities for children to play outside matters not just in gardens in the UK but also across the world.



DUSTY GEDGE



Dusty is a green infrastructure consultant working in London, the UK and Europe. He is the current President of the European Federation of Green Roof Associations (EFB). Professionally he is co-founder of Gentian Ltd a company set up to map and measure Biodiversity Net Gain remotely.

In 2021 he was appointed Industry Expert-in-Residence at the Bartlett School of Architecture, University College London.

He has a particular interest in biodiversity and urban nature, but also focuses on climate resilience and the promotion of greener cities through multi-functional green infrastructure.

To this end he has been instrumental in writing strategic reports on green roofs and green infrastructure, the most recent of which is Living Roofs and Walls: from policy to practice (2019). He is also co-author with John Little, Nigel Dunnett and Ed Snodgrass of a DIY book Small Green Roofs: Low Tech Options for Greener Living (2011).

Dusty is a recognised designer of green roofs, on which he provides technical and policy advice across the world.

Among the many seminal green roofs he has conceived are Barclays HQ in Canary Wharf and the Komodo Dragon House at London Zoo (ZSL).



DUSTY GEDGE

Wilding Roofs for Nature and People

Even though roofs are separate entities from ground level landscape, they provide important vital connections in cities and provide important sanctuaries for people's health and nature. The need for green space in cities was particularly highlighted during the pandemic.

Green roofs are increasingly important in London and will soon be subject to Biodiversity Net Gain legislation across all cities in England. Nevertheless there is a tendency for off-the-shelf solutions to be delivered. Dusty argues that the design and positive impact of gardens and natural landscapes on green roofs can be so much more than those generic denominators.

There will be a focus on biodiversity, as designing for nature should make green roofs better not just for wildlife but for people's wellbeing too. As well as discussing nature, Dusty will address other technologies, such as solar energy, that be combined with vegetation and soil to make a real contribution to both the climate and biodiversity crises.

Dusty's talk will highlight the range of possibilities that be achieved at roof level, whether on new or existing buildings. He will show examples of his own work and work he has visited around the world.



TOM HOBLYN MSGD



Tom is a British landscape designer, horticulturist and gardener who set up his practice shortly after graduating from The Royal Botanic Gardens, Kew.

His work is underpinned by his innate understanding and knowledge as a plantsman and horticultural master, and an appreciation and awareness of place in the landscape. From his home in Suffolk, where he runs his practice, he and his team use the walled garden to trial and experience new ideas and designs.

An established figure at both RHS Chelsea and RHS Hampton Court, he has won three gold and four silver gilt and two silver medals, as well as the

coveted People's Choice Award for his Arthritis UK sponsored garden and a nomination for The People's Choice of The Decade Award in 2020. In May 2022 he was awarded a further gold medal for his garden, The Boodles Travel Garden at RHS Chelsea.

Tom has always been, and places great importance on, working with and supporting his local community. This involvement ranges from local planting initiatives to judging East Anglia In Bloom events and encouraging education for the young in horticulture. He has recently designed a specialist garden for a children's Hospice with the Greenfingers Charity and is keen to further encourage and develop the healing and supportive aspects of the garden and all it encompasses.



He is regularly interviewed by the press and asked to talk and share his knowledge for Garden Masterclass and many other organisations.

TOM HOBLYN MSGD

People, Place and the Planet

Traditionally, we were trained to protect our creative vision from exterior influences. By comparison today, argues Tom, the climatic and environmental upheaval and increasing financial pressures have pushed us to become more collaborative. Such collaboration is something we would have considered a compromise in the past.

A successful creative vision is now realised through embracing influences between people, place and planet. What is more, these influences can be used as a wayfinding tool to create great spaces. In other words, once you've taken on the needs of the people who will use the space, thoroughly analysed the site and considered its impact on the planet, that journey will produce the best possible outcome.

Using four projects, from a £21 million public space used by students and families that must cope with the exodus of 20,000 concert goers, to compiling a plant palette for a site submerged by floodwater in the winter yet which is bone dry in the summer, Tom will demonstrate the wayfinding process that he has adopted to create great spaces.



HELEN ELKS-SMITH FSGD

Helen believes that landscapes and gardens should inspire, delight and sit comfortably in their setting. Known for her thoughtful approach to design and expertise in subtle, textural planting,

Helen's work is informed by a lifelong love for landscape and an intuitive understanding of the way gardens make us feel. Creating timeless gardens that are sensitive to their location, she believes that a beautiful, well-designed garden can have a hugely positive impact on our well-being.



With a background in mathematics, Helen went on to study garden design at Writtle College where her two interests were combined giving her the rare ability to think both creatively and technically, so that the gardens she creates are not only beautiful but practical too.

Helen has won numerous awards including two RHS gold medals, People's Choice, three design awards from the Society of Garden Designers (SGD) and two Design Excellence Awards from the British Association of Landscape Industries (BALI). Helen joined Angela Scanlon for the 2021 BBC TV Series 'Your Garden Made Perfect'.



HELEN ELKS-SMITH FSGD

Connections through time and space

As designers we bring about change and that change impacts the wider landscape and community. So how we do we decide what we need to change?

Change is driven by the needs of a client and the design brief starts as an expression of their experiences to date, their past.

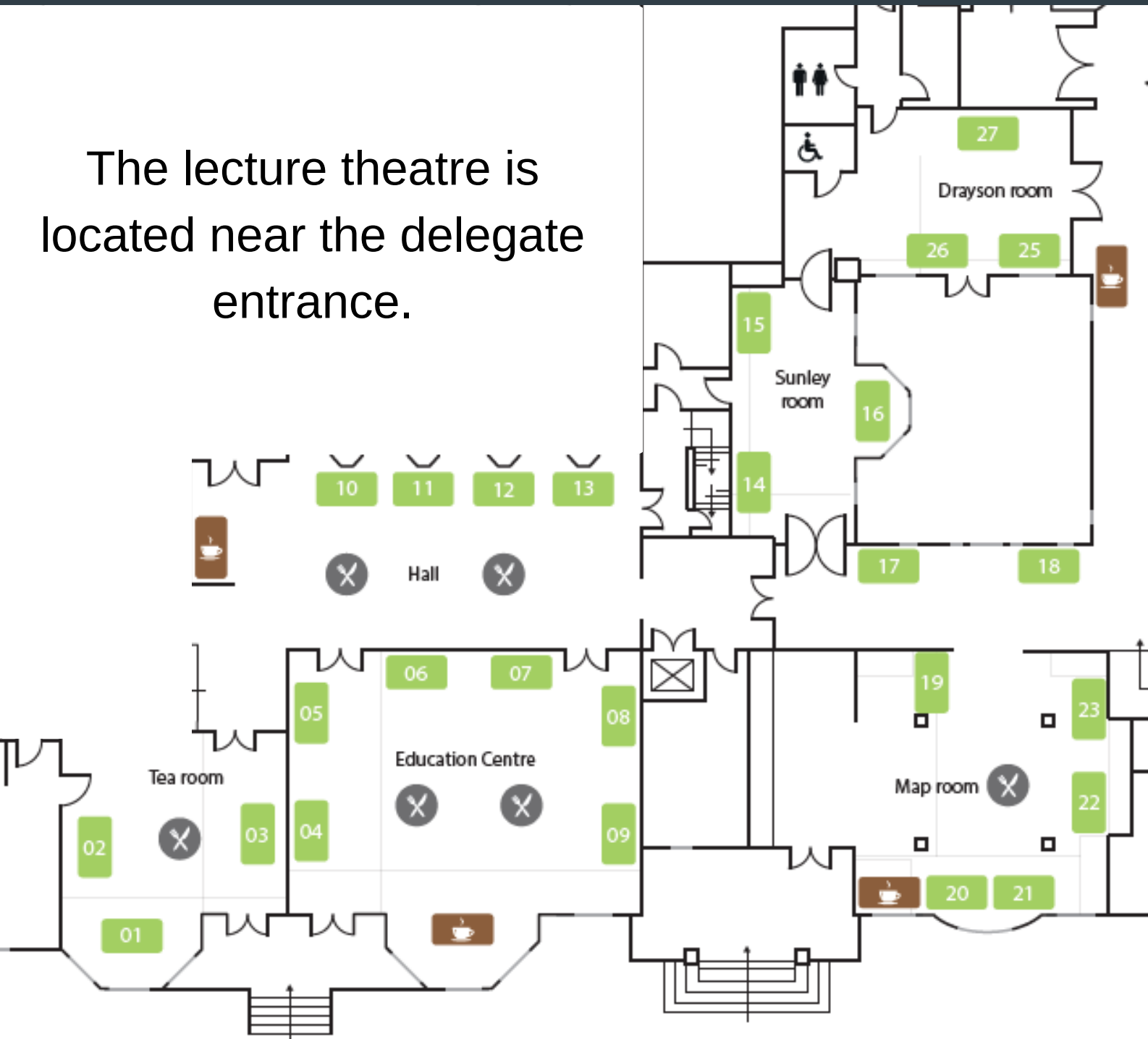
A design needs to be sensitive to that which has gone before. Our challenge is to not be held captive by the past or current 'trends' but to look to the future, to create landscapes that will survive and thrive in the decades and centuries ahead. We are simply temporary custodians of precious soil. Gardens are never finished, rather they are living entities in a state of flux.

Helen will use a number of her garden schemes to explore these ideas.



EXHIBITOR STAND LOCATIONS

The lecture theatre is located near the delegate entrance.



CONFERENCE PRIZE DRAW

Don't miss out on your chance to win:

First Prize: A pair of future SGD Conference tickets

Second Prize: A single future SGD Conference ticket

Visitors to the Conference will be provided with a card on arrival at reception. When you visit an exhibitor stand, you will be given a sticker to place against the appropriate exhibitor on the card.

Collect at least 12 of these stickers and turn in your card to the SGD stand (**Stand 16**) to be eligible for the draw.

Rules of entry:

Your card must have **your name** written in print.

One entry only per delegate

Completed cards must be returned to the SGD stand **before** the end of the afternoon tea break.

You must visit **at least 12** different exhibition stands.

**The results will be drawn and announced
by the SGD Co-Chairs at the end of the day.**

CONFERENCE EXHIBITORS

THE

MODERN

GARDEN COMPANY

STAND 01

Drawing upon our extensive experience to curate distinctive outdoor spaces we apply our knowledge of products and materials to develop unique solutions that complement your planting scheme and respects the landscape.

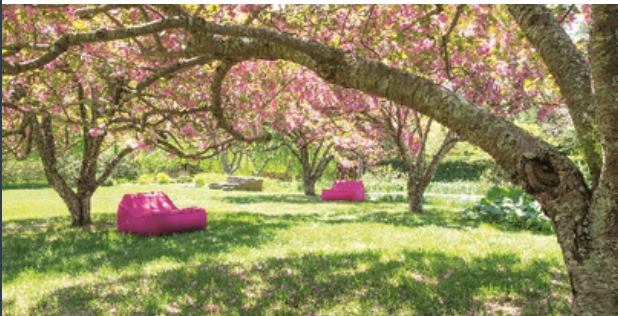
Our technical expertise means that we propose the best products with longevity and sustainability as our guiding principles.

On the Stand:

Lynne Isham – Creative Director

Find Us Online:

www.moderngarden.co.uk



DAVID AUSTIN®

STAND 02

Now offering over 100 English shrub, climbing and rambling rose varieties to Garden Designers, the David Austin Roses Professional Trade Services Team are on-hand to provide market-leading support and roses at trade prices backed with a 5-year guarantee.

On the Stand:

Richard Stubbs & Liam Beddall

Find Us Online:

www.davidaustinroses.co.uk/



CONFERENCE EXHIBITORS



PROVENDER
NURSERIES

STAND 03

Plant healthy certificated trade nursery.

Provender Nurseries supply designers with a broad range of quality plants, soils and sundries. Our knowledgeable team are able to advise and source on your planting plans.

The nursery is stocked all year round with a diverse, interesting range of plants that every discerning designer needs

On the Stand:

Nigel Gibson

Find Us Online:

www.provendernurseries.co.uk



STAND 04



VANDE MOORTEL
BRICKS · SLIPS · PAVERS

Brickworks Vande Moortel, has grown to become the UK's leading supplier of continental clay paving, offers unique sizes, colours and finishes such as the popular low oxygen fired grey pavers.

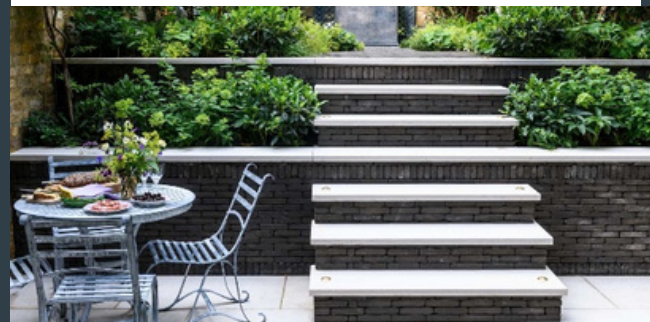
Their pavers have been used in various award-winning projects and are used worldwide by top landscape architects and garden designers.

On the Stand:

Christophe D'haene & Miles Hebron

Find Us Online:

www.vandemoortel.co.uk



CONFERENCE EXHIBITORS

STAND 05



Our aim is to be the 'go to' name for anything metal.

We have a fantastic track record with some of the UK's leading Garden Designers and Landscapers – if bespoke metalwork is part of your vision then please get in touch.

On the Stand:

Daniel Brown

Find Us Online:

tbrownandsons.co.uk



STAND 06



TouchWood Play is a design, build and install bespoke playground company. We help our clients throughout the entire process of playground creation, so you end up with a play space that reflects your thoughts and desires.

Our clients tell us that our expert team of specialist designers, craftspeople and installers are why TouchWood playgrounds engage and amaze children.

On the Stand:

Sam McGeever

Find Us Online:

www.touchwoodplay.co.uk



CONFERENCE EXHIBITORS



STAND 07

Viridis plants is a leading wholesale plant supplier, dedicated to delivering a premium plant supply service.

Operating from our midland's nursery we reliably service elite garden designers and landscaping companies nationwide.

The Viridis team has a wealth of plant knowledge and horticultural experience, supported by a large range of quality production over four growing sites and a network of UK and continental suppliers.

On the Stand:

Ryan Simpson

Find Us Online:

www.viridisplants.co.uk



TALASEY

GROUP

STAND 08

Talasey Group supply a wide choice of landscaping products including porcelain paving and cladding, natural stone materials and composite decking, fencing and cladding.

Talk to us today about our Designer & Installer Network, and how our range of benefits can support you and your business with lead generation, marketing support and much more!

On the Stand:

Craig Brook & Ray Stephenson

Find Us Online:

www.talasey.co.uk



CONFERENCE EXHIBITORS



STAND 09

ALLGREEN

MASTERS IN STONE

Allgreen is a unique, family-owned company offering an inspirational collection of the finest exterior stones available. Countless years of combined masonry heritage drawn from generations of quarrymen and the traditional skill of expert masons is captured in one of the most extraordinary collections of stones today.

On the Stand:

Harry Norman & Cassia Taylor

Find Us Online:

www.allgreen.uk



STAND 10

Barcham

The Tree Specialists

Industry leaders in Bio security and one of the first nurseries to gain 'Plant healthy' accreditation, Barcham have been growing trees for over 28 years on their 300-acre site near Ely, Cambridgeshire and are the largest container tree nursery in Europe.

On the Stand:

David Johnson

Find Us Online:

www.barchampro.co.uk



CONFERENCE EXHIBITORS

STAND 11



Millboard decking and cladding is inspired by the beauty of nature but built to outperform it. Moulded from selected timbers and hand-coloured in authentic tones to look exceptionally like real wood, the boards do not rot, retain high slip-resistance even when wet, and require little maintenance other than an occasional clean.

On the Stand:

Elon Douglass & Guy Douglass

Find Us Online:

www.millboard.co.uk



STAND 12



Watermatic Ltd specialises in tailor-made, sustainable, automatic irrigation making green spaces flourish in both Residential and Commercial projects – from patios to palaces! No job is too large or too small for our team.

Our water-saving Drought and Hosepipe ban-busting Landscape and Garden Irrigation Solutions are approved by UK government.

On the Stand:

Zac Ribak & Haim Hareven

Find Us Online:

www.watermaticltd.co.uk



CONFERENCE EXHIBITORS



STAND 13

SCHELLEVIS®

Schellevis® produces concrete paving and elements, to connect architecture with nature. Always supporting and respecting the outdoor space they are placed in.

Combined with each other they help transform every outdoor space into a harmonious, timeless living environment.

On the Stand:

Ryan Burge

Find Us Online:

www.schellevis.co.uk



HEWSON BOOKS The
Kew
Bookshop

STAND 14/15

We are an Award winning Independent Bookseller in London, with strong sections in Fiction, Childrens and General Non Fiction Books.

Our website includes a larger range of books than our shops including a specialist horticulture range.

We provide books for schools, libraries and manage bookfairs and external events.

We offer customer service and recommendations that online algorithms simply can't match.

On the Stand:

Adam Hewson & Russ Fisk

Find Us Online:

www.hewsonbooks.co.uk

CONFERENCE EXHIBITORS

STAND 16



Drop in your prize draw entries here!

Ensure your name is on your card and that you have at least 12 stickers from different exhibitors.

Find Us Online:

www.sgd.org.uk



STAND 17



Griffin Nurseries is one of the country's leading growers of specimen trees and shrubs. On our 35 acre nursery, established in 1989 we grow an extensive range of the finest quality hardy nursery stock both in container and open ground. Pleaching, multistems and topiary are our speciality.

On the Stand:

Alan Standring, Rupert White & Theo White

Find Us Online:

www.griffinnurseries.co.uk



CONFERENCE EXHIBITORS

STAND 18

The image displays the Shoot gardening app and website on three devices: a tablet, a laptop, and a smartphone. The tablet shows a 'Master Plant List' with columns for Name, Plant Name, Season of interest, Soil Drainage, Sunlight, Height, and New plants. The laptop shows a garden design plan with various plants and structures. The smartphone shows a 'Gardens projects' screen with a search bar and a list of projects. A starburst graphic contains the text 'SDG £50 OFF Today'. Below the devices, the code 'Code: SGD23' and 'Ends today 5pm' are displayed.

Code: SGD23
Ends today 5pm

Your cutting-edge new Shoot



After years of research and development, your newly designed Shoot website brings additional valuable resources and features to save you even more time and money, including a new 'master plant list' and 'season of interest colour charts' at a click.

www.shootgardening.co.uk

On Stand 18:
Benjamin Sparks, Jacky Robinson

CONFERENCE EXHIBITORS

STAND 19

Landscapeplus

Landscapeplus was started over 20 years ago by two brothers from a horticultural family and since, has grown to become the industry's only one-stop-shop for lighting, water features and irrigation. "So much more than a supplier" is a phrase that is heard on a regular basis.

Don't miss the Landscapeplus sponsor presentation at 12:30PM!

On the Stand:

*Sam Cox, Josh Murray
& Ryan Simmonds*

Find Us Online:

www.landscapeplus.com



Image via Creative Roots Landscaping

CONFERENCE EXHIBITORS



Boughton

STAND 20

Boughton are an acknowledged specialist and market leading supplier of 'as dug' natural topsoil, growing media, specialist loam blends and Green Roof Substrates with over 30 years of successful delivery to the industry UK wide. Their mission is to promote the most effective use of materials and to build sustainable and environmentally responsible gardens and landscapes.

On the Stand:

Simon Hedley & Jason Lock MSGD

Find Us Online:

www.boughton.co.uk



Architectural

— PLANTS —

Since 1990

STAND 21

Established in 1990, Architectural Plants is an award-winning specialist nursery in West Sussex.

Experts in plants that are shapely, bold and exotic, with a reputation for transforming gardens, it is home to the broadest collection of architectural specimens and homegrown rarities, in the UK. Open by appointment.

On the Stand:

Flo Harris & Jason Gilford

Find Us Online:

www.architecturalplants.com



CONFERENCE EXHIBITORS



STAND 22

We transform functional construction products into works of art by combining innovative concepts, unique designs with the very best materials.

We create award-winning drainage solutions along with an impressive range of other landscape products, we let innovative design and quality challenge the established approach to products and function. SGD Product of the Year.

On the Stand:

Hao Fu & John Harte

Find Us Online:

www.lateraldesignstudio.co.uk



STAND 23

We are the one stop shop for landscaping materials for garden designers, landscapers and landscape architects throughout the UK.

Our easy to use website with useful online quoting tools, award winning service and landscaping advice is a perfect support for your garden design business.

On the Stand:

Anna Roochove & Richard Bickler

Find Us Online:

www.arbourlandscapesolutions.co.uk



CONFERENCE EXHIBITORS



STAND 24

LANDSCAPE
THE INDUSTRY TRADE SHOW

Established as the essential trade event, LANDSCAPE attracts garden designers, landscape architects, landscape contractors, local authority landscaping professionals, architects, architectural technologists, facilities managers and interior designers from all over the UK and beyond.

On the Stand:

*Jeremy Storey-Walker &
Justin Roberts*

Find Us Online:

www.landscapeshow.co.uk

27th & 28th
SEPTEMBER 2023
HALL 3, NEC, BIRMINGHAM



STAND 25

Practicality Brown have been supplying top quality semi-mature trees and Instant Hedges, from our nursery in Iver, Buckinghamshire, since 1989.

Our Practical Instant Hedge™ range is pre-grown in 1m long pieces, making handling and planting very easy and it can also be planted all year round.

On the Stand:

Graeme Jenkins & Ginny Lemarie

Find Us Online:

www.pracbrown.co.uk



CONFERENCE EXHIBITORS



STAND 26

Garden Spark installs lighting and power in gardens and outdoor spaces. Unlike many other companies offering these services, we specialize solely in the outdoor domain.

Great at helping garden designers answer questions like, “what shall we do about the lighting?”, we love being part of team and discussing project.

On the Stand:

Mark Packham & Sophie Packham

Find Us Online:

www.gardenspark.co.uk



STAND 27

Foras innovate in natural stone, glass, acrylic and metal to produce an exceptional range of water features, seating, and planters, together with an extensive collection of tiles and flagstones.

Founded in 2003, they have earned their reputation for providing high quality products with exceptional customer service. Your project deserves Foras.

On the Stand:

Claire Brutnall, Lewis Haynes & John Wootton

Find Us Online:

www.foras.co.uk



SGD CONFERENCE

Royal Geographical Society
London

Saturday 18 November 2023

CROSSING CULTURES

Globally inspired, locally focused gardens and landscaping

Forget about flying! A walk around a typical English style garden with herbaceous borders and specimen shrubs and trees offers a tour of the world.

To paraphrase Shakespeare's 'As You Like It':

"All the garden's a stage,

"And all the plants and rocks merely players;

"They have their exits and their entrances ..."

The conference will be chaired by multi RHS medal winning garden designer **Jo Thompson**. Confirmed speakers include **Tony Kirkham**, until recently Head of Arboretum at Royal Botanic Gardens Kew, and **Johanna Gibbons**, founding Partner of J & L Gibbons and founding Director of the social enterprise Landscape Learn.

Reflecting on their own design and horticultural practices, the speakers at **Crossing Cultures** will consider questions such as:

- What are the ethics of borrowing from other cultures?
- Are restrictions on importing plant material limiting the designer's palette and potential for biodiversity?
- What lessons can be learned from travelling through foreign landscapes?
- How do diverse cultures think about and nurture Nature?
- At what point does the designer's cultural heritage meet with the client's interests and style, to make a signature garden with award winning potential?

SGD 2024 AWARDS



SAVE THE DATE

Friday 02 February 2024



"To plant a garden is to believe in tomorrow."

AUDREY HEPBURN



SOCIETY OF
GARDEN
DESIGNERS

Leading the way in excellence and innovation

Email: info@sgd.org.uk
Telephone: 01989 551083